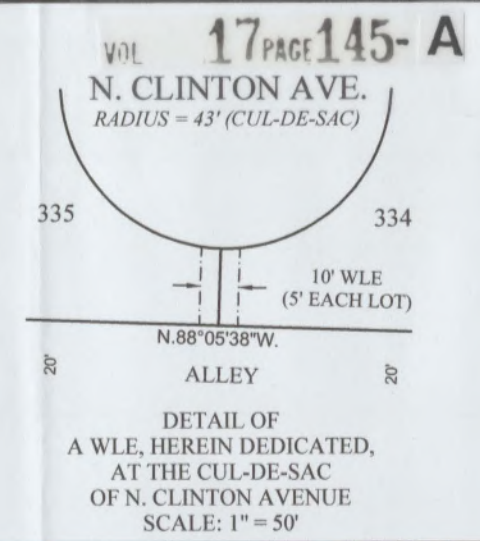


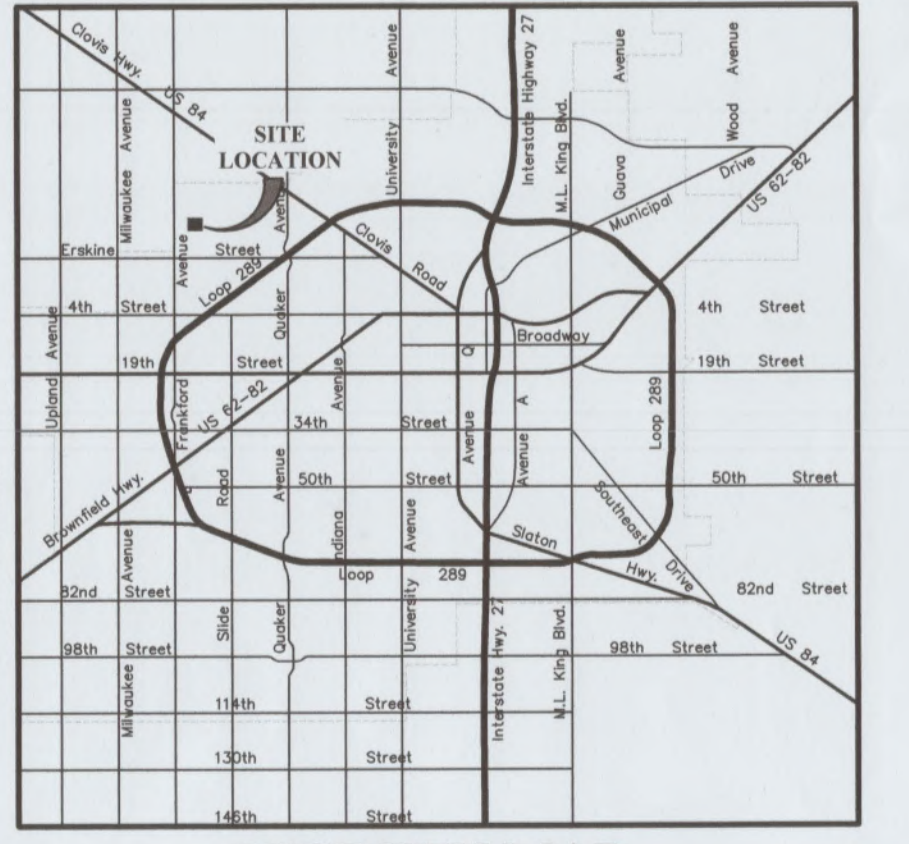
2058.04
2023018338



CURVE	RADIUS	ARC LENGTH	DELTA ANGLE	CHORD LENGTH	CHORD BEARING
C1	40.00'	26.06'	37°19'40"	25.60'	S 16°43'33"E
C2	43.00'	14.74'	19°38'35"	14.67'	N 25°34'05"W
C3	43.00'	80.82'	107°41'05"	69.44'	N 38°05'44"E
C4	43.00'	80.82'	107°41'05"	69.44'	S 34°13'11"E
C5	43.00'	14.74'	19°38'35"	14.67'	S 29°26'39"W
C6	40.00'	26.06'	37°19'40"	25.60'	S 20°36'07"W
C7	974.00'	23.81'	1°24'02"	23.81'	N 02°38'18"E
C8	40.00'	26.06'	37°19'40"	25.60'	N 16°43'33"W
C9	43.00'	14.74'	19°38'35"	14.33'	N 25°47'46"W
C10	43.00'	81.16'	108°08'25"	69.64'	N 37°52'04"E
C11	974.00'	86.32'	5°04'40"	86.29'	N 10°42'30"E
C12	974.00'	75.70'	4°27'10"	75.68'	N 17°51'19"E
C13	1026.00'	13.81'	00°46'16"	13.81'	N 19°41'46"E
C14	1026.00'	83.15'	4°38'36"	83.13'	N 04°15'35"E

LINCOLN 16 ADDITION,

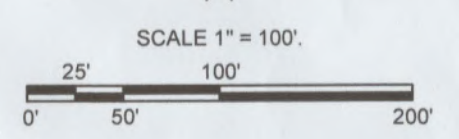
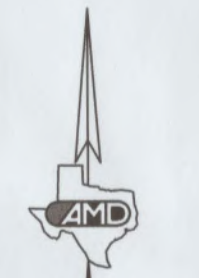
LOTS 319 THROUGH 408,
AN ADDITION TO THE CITY OF LUBBOCK,
LUBBOCK COUNTY, TEXAS



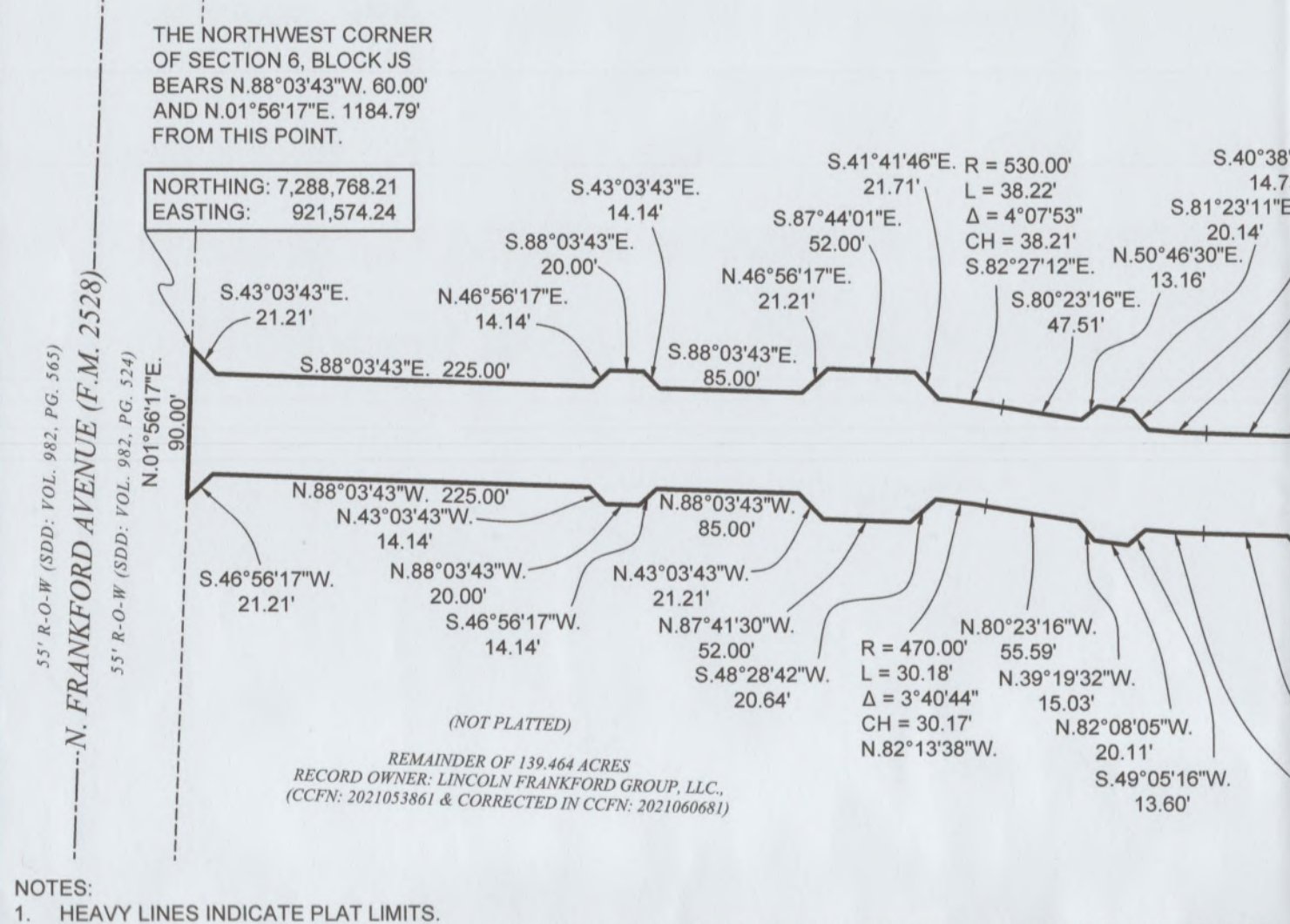
VICINITY MAP
NOT TO SCALE

THE NORTHWEST CORNER
OF SECTION 6, BLOCK JS
BEARS N 01°45'47"E, 1691.65'
AND N 88°14'13"W, 2603.24'
FROM THIS POINT.

NORTHING: 7,288,283.48
EASTING: 924,106.80



LINE	BEARING	DISTANCE
L1	S 46°55'37" W	14.15'
L2	N 43°04'41" W	21.21'
L3	S 43°03'26" E	21.21'
L4	N 46°56'17" E	14.14'
L5	S 43°03'43" E	14.14'
L6	N 46°56'17" E	21.21'
L7	S 46°55'19" W	21.22'
L8	N 01°54'22" E	20.00'
L9	S 43°03'43" E	21.21'
L10	N 43°04'41" W	14.14'
L11	S 46°55'19" W	14.15'
L12	N 47°51'32" E	21.55'
L13	N 40°10'01" W	20.11'
L14	N 52°44'23" E	15.50'
L15	S 46°56'34" W	21.22'
L16	S 43°03'26" E	14.14'
L17	S 46°56'34" W	14.14'
L18	N 36°21'49" W	12.40'
L19	N 55°24'54" E	24.11'
L20	N 40°31'51" W	20.26'
L21	N 01°56'17" E	2.00'
L22	N 46°56'17" E	14.14'
L23	N 43°03'43" W	14.14'



- NOTES:
- HEAVY LINES INDICATE PLAT LIMITS.
 - ALL STREETS, ALLEYS, AND EASEMENTS WITHIN PLAT LIMITS ARE HEREIN DEDICATED, UNLESS NOTED OTHERWISE.
 - NO BUILDING PERMIT SHALL BE ISSUED ON ANY SURVEY CERTIFICATE THAT IS NOT IN ACCORDANCE WITH AN APPROVED FINAL PLAT UNLESS AN EXCEPTION IS PROVIDED BY THE PLANNING AND ZONING COMMISSION POLICY OR BY THE LUBBOCK CODE OF ORDINANCES.
 - ALL UTILITY SERVICE SHALL BE IN ACCORDANCE WITH THE "UNDERGROUND UTILITIES POLICY" STATEMENT BY THE PLANNING AND ZONING COMMISSION OF THE CITY OF LUBBOCK, TEXAS AND THE PROVISIONS OF SECTION 36.09.095 OF THE LUBBOCK CODE OF ORDINANCES.
 - ANY RELOCATION OR REVISION OF EXISTING FACILITIES SHALL BE THE SUBDIVIDER'S EXPENSE. COMPENSATION SHALL BE MADE PRIOR TO RECORDING OF THIS FINAL PLAT.
 - ALL EXISTING OR PROPOSED UTILITY SERVICES TO AND ON TRACTS INDICATED BY THIS PLAT SHALL BE CONTAINED IN THE PUBLIC RIGHT-OF-WAY AND PUBLIC OR PRIVATE UTILITY EASEMENTS. UTILITY SERVICE INSTALLATION REQUESTED AT A FUTURE DATE AND NOT WITHIN AN EASEMENT INDICATED BY THIS PLAT, SHALL BE WITHIN A PROPER UTILITY EASEMENT GRANTED BY THE OWNER OF SAID PROPERTY BY SEPARATE RECORDED INSTRUMENT PRIOR TO THE PROVISION OF SUCH SERVICE. SUCH EASEMENTS SHALL BE AT THE EXPENSE OF THE ENTITY REQUESTING SUCH INSTALLATION.
 - ALL EASEMENTS HEREIN GRANTED SHALL ENTITLE THE CITY OR THE UTILITY COMPANY USING SUCH EASEMENTS TO THE RIGHT TO REMOVE, REPAIR OR REPLACE ANY LINES, PIPES, CONDUITS, OR POLES WITHIN SUCH EASEMENTS AS MAY BE DETERMINED BY THE CITY OR UTILITY COMPANY WITHOUT THE CITY OR UTILITY COMPANY BEING RESPONSIBLE OR LIABLE FOR THE REPLACEMENT OF IMPROVEMENTS, PAVING OR SURFACING OF THE EASEMENT NECESSITATED BY SUCH REPAIR, REMOVAL, OR REPLACEMENT. EASEMENTS DESIGNATED OR INTENDED FOR VEHICULAR PASSAGE (UTILITY AND EMERGENCY) OR PEDESTRIAN ACCESS SHALL NOT BE FENCED OR OTHERWISE OBSTRUCTED.
 - ANY EASEMENTS OR RIGHTS-OF-WAY SHOWN AS "TO BE DEDICATED BY SEPARATE INSTRUMENT" ARE SHOWN ON THE PLAT FOR INFORMATION PURPOSES ONLY. THIS PLAT DOES NOT DEDICATE SAID EASEMENTS.
 - MINIMUM FLOOR ELEVATIONS SHALL CONFORM TO THE REQUIREMENTS OF THE LUBBOCK DRAINAGE CRITERIA MANUAL, AS ADOPTED BY ORDINANCE 10022, AS AMENDED, AND SECTION 28.09.131, SECTION 28.14.004 AND SECTION 30.03.073 OF THE LUBBOCK CODE OF ORDINANCES.
 - IN ORDER TO PREVENT DAMAGE TO PUBLIC AND PRIVATE UTILITIES AND TO MINIMIZE AND OR ELIMINATE INTERRUPTION OF UTILITY SERVICES, THE CITY OF LUBBOCK SOLID WASTE SERVICES DEPARTMENT REQUESTS THAT NO UTILITY RISERS, METER BASES, PEDESTALS, ETC., PUBLIC OR PRIVATE, BE PLACED IN THE CHAMFERED CORNERS OF ALLEYWAYS.

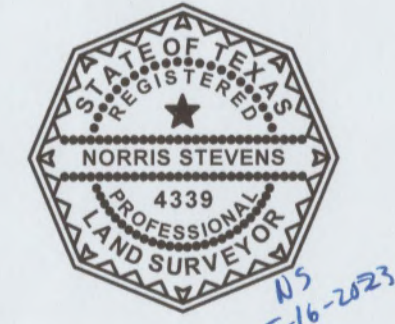
CCFN = COUNTY CLERK'S FILE NUMBER.
P&D = PLAT AND DEDICATION NUMBER.
DRE = DRAINAGE EASEMENT.
DUE = DRAINAGE AND UTILITY EASEMENT.
LPL = LUBBOCK POWER & LIGHT.
OPE = OVERHEAD POWERLINE EASEMENT.
R-O-W = RIGHT-OF-WAY.
SDD = STREET DEDICATION DEED.
SLE = SEWER LINE EASEMENT.
TPE = 4' X 6' (MINIMUM) TRANSFORMER PAD EASEMENT (HEREIN GRANTED TO LP&L), INDICATED BY SYMBOL □.
USE = UNDERGROUND STREET LIGHT CABLE EASEMENT (HEREIN GRANTED TO LP&L).
ULIE = UNDERGROUND UTILITY EASEMENT (HEREIN GRANTED TO LP&L).
WLE = WATER LINE EASEMENT.
ALL CORNERS MONUMENTED WITH 1/2" IRON ROD WITH CAP MARKED "AMD ENGINEERING", UNLESS OTHERWISE SPECIFIED.
BEARINGS AND COORDINATES SHOWN HEREON ARE RELATIVE TO THE TEXAS COORDINATE SYSTEM OF 1983 (2011), TEXAS NORTH CENTRAL ZONE, AS DETERMINED BY A POINT OF ORIGIN LOCATED AT NORTHING: 7,287,216.98 AND EASTING: 922,981.90. THE CONVERGENCE ANGLE TO TRUE NORTH IS (-)01° 52' 29.85" AND THE COMBINED SCALE FACTOR IS 0.99976907.
DISTANCES SHOWN HEREON ARE AT SURFACE, IN U.S. SURVEY FEET.
THESE PLAT LIMITS CONTAIN 29.193 ACRES.
DESCRIPTION OF THESE PLAT LIMITS ARE ON A SEPARATE DOCUMENT, OF SAME DATE HEREWITH.

APPROVED THIS 16th DAY OF September, 2023
BY THE PLANNING AND ZONING COMMISSION OF THE CITY OF LUBBOCK, TEXAS.

[Signature]
CHAIRMAN

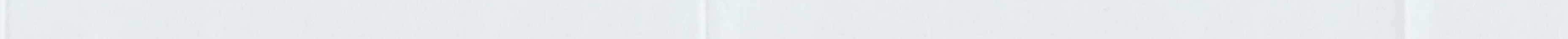
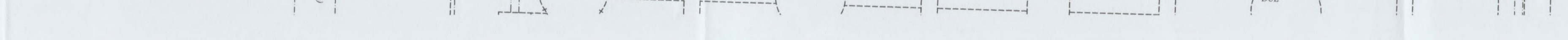
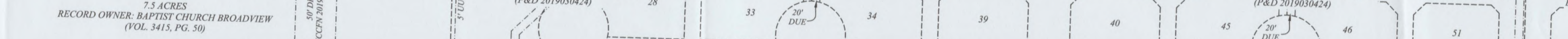
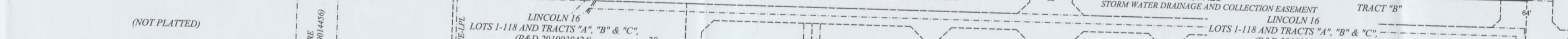
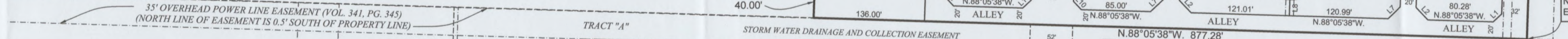
[Signature]
DIRECTOR OF PLANNING

KNOW ALL MEN BY THESE PRESENTS:
THAT I, NORRIS STEVENS, REGISTERED PROFESSIONAL LAND SURVEYOR, DO HEREBY CERTIFY THAT I PREPARED THIS PLAT FROM AN ACTUAL AND ACCURATE SURVEY OF THE LAND AND THAT THE CORNER MONUMENTS AND/OR OTHER CONTROL SHOWN THEREON WERE PROPERLY PLACED UNDER MY PERSONAL SUPERVISION, IN ACCORDANCE WITH THE SUBDIVISION REGULATIONS OF THE CITY OF LUBBOCK, TEXAS.



REGISTERED PROFESSIONAL LAND SURVEYOR # 4339
LUBBOCK, TEXAS

SURVEYED: MARCH 20, 2023



NORTHING: 7,287,240.34
EASTING: 924,103.33

RECORD OWNER: NWP EB-3 PROJECT, L.L.C.
(CCFN: 2021019386)

RECORD OWNER: NWP EB-3 PROJECT, L.L.C.
(CCFN: 2021019386)

RECORD OWNER: NWP EB-3 PROJECT, L.L.C.
(CCFN: 2021019386)

RECORD OWNER: NWP EB-3 PROJECT, L.L.C.
(CCFN: 2021019386)

RECORD OWNER: NWP EB-3 PROJECT, L.L.C.
(CCFN: 2021019386)

SECTION 6, BLOCK JS, E.L. & R.R. CO. SURVEY, ABST. NO. 1492

**CIVIL ENGINEERING
LAND SURVEYING**

AMD Engineering, LLC
8515 88th Street, Suite 300
Lubbock, TX 79424

Phone: 806-771-5976
Fax: 806-771-7625
TBPELS Reg. # 01176500

Accuracy - Efficiency - Integrity

PROPERTY OWNER: LINCOLN FRANKFORD GROUP
ADDRESS: 3913 114TH ST. SUITE 7 LUBBOCK, TEXAS 79423
PHONE: 806-781-7928
JOB NUMBER: 210078

CEDELS
© 2023 ALL RIGHTS RESERVED