

Plat Notes:
Scale: 1" = 100'

Heavy lines indicate plat limits.

All streets, alleys and easements within plat limits are herein dedicated.

All easements dedicated hereby shall entitle the City or utility company using such easements to the right to remove, repair or replace any lines, pipes, conduits or poles within such easements as may be determined by the City or utility company without the City or utility company being responsible or liable for the replacement of improvements, paving or surfacing of the easement necessitated by such removal, repair or replacement. Easements designated or intended for vehicular passage (utility and emergency) or pedestrian access shall not be fenced or otherwise obstructed.

All electrical service shall be in accordance with the Underground Utilities Policy Statement by the Planning and Zoning Commission of the City of Lubbock, Texas.

Any relocation or revision of existing facilities shall be at the developer's expense. Compensation shall be made prior to the recording of any portion of this final plat.

All existing or proposed utility services to and on tracts indicated by this plat shall be contained in the public right-of-way and public or private utility easements. Utility service installation requested at a future date, and not within an easement indicated by this plat, shall be within a proper utility easement granted by the owner of said property by separate recorded instrument prior to the provision of such service. Such easements shall be at the developer's expense.

No building permit shall be issued on any survey certificate that is not in accordance with an approved final plat unless exception is provided by Planning and Zoning Commission policy or by the Lubbock Code of Ordinances.

Minimum floor elevations shall conform to the requirements of the Lubbock Drainage Criteria Manual, as adopted by Ord. 10022, as amended, Section 28.09.131, Section 28.14.004 and Section 30.03.073 of the Lubbock Code of Ordinances.

The survey information shown hereon was prepared from the result of an on the ground survey of the property shown hereon, and has been completed substantially in compliance with the Professional and Technical Standards promulgated by the Texas Board of Professional Land Surveying Practices Act, Section 663.13.

General Notes:

Record documents other than those shown may affect this tract.

Monuments indicated as found by this survey are not "physical monuments of record dignity" unless so noted.

Found monuments are accepted by this surveyor as controlling evidence due to substantial agreement with record documents unless otherwise noted.

Only those copies which bear an original ink impression seal or embossed seal and signature will be considered a "valid" copy. Delta Land Surveying, LLC, will not be responsible for the content of anything other than a valid copy of this survey.

Surveyor's Notes:

Lots 1-118 and Tracts "A" - "C", Lincoln 16, an Addition contains 22.24041 acres (968,792.2 sq. ft.) within the plat limits.

Set 1/2" iron rod with blue cap marked DELTA RPLS 6684 on all interior lot corners.

Bearings are based on the West line of Section 6, Block JS being previously recognized as N01°53'10"E.

Coordinates are based on the Texas Coordinate System of 1983, North Central Zone.

Field notes prepared on separate document on same date.

W/15 PAGE 74-B

W/15 PAGE 74-A

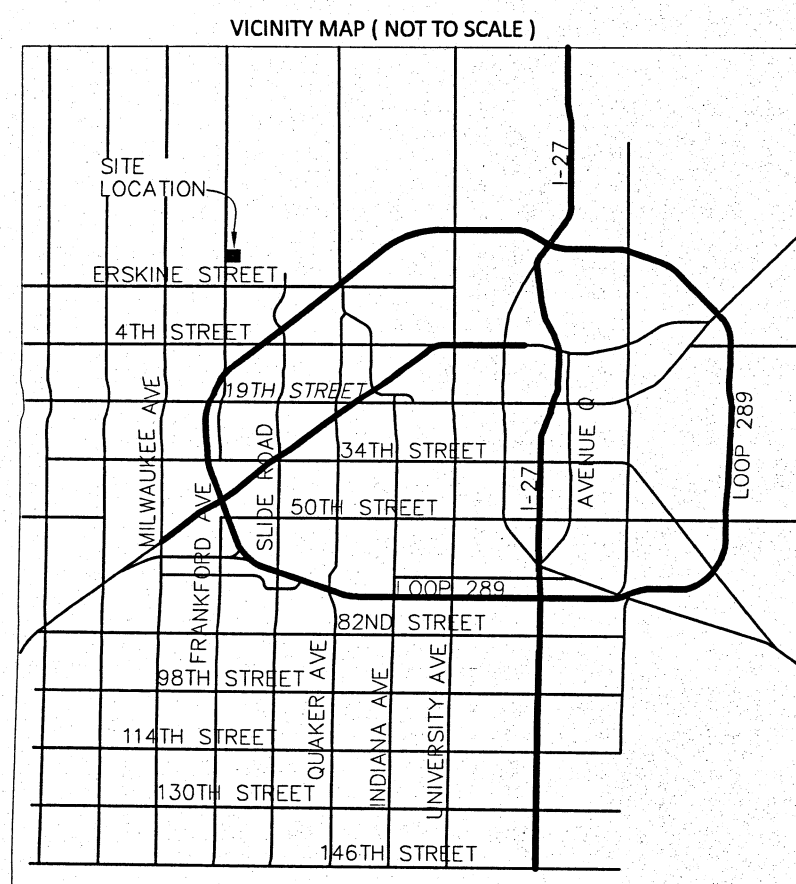
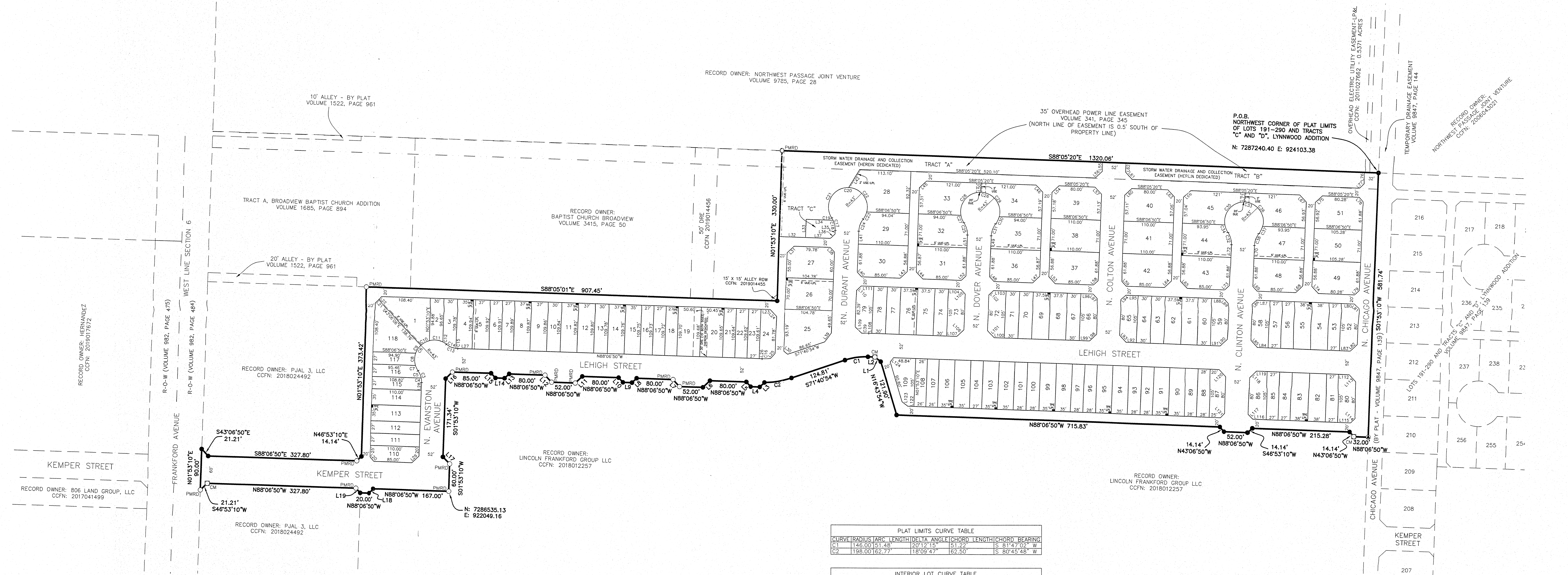
0 100 200



- SET 1/2" IRON ROD WITH BLUE CAP MARKED DELTA RPLS 6684
- FD. 1/2" IRON ROD WITH ORANGE CAP MARKED AMD ENGINEERING
- SET NAIL IN ASPHALT
- FD. 3/8" IRON ROD
- FD. 1/2" IRON ROD
- POINT OF BEGINNING
- CCFN COUNTY CLERK FILE NUMBER
- PMRD PHYSICAL MONUMENT OF RECORD DIGNITY
- CM CONTROLLING MONUMENT
- TPE TRANSFORMER PAD EASEMENT (4' X 6')
- USE UNDERGROUND STREET LIGHT CABLE EASEMENT
- UUE UNDERGROUND UTILITY EASEMENT
- DRE DRAINAGE EASEMENT
- DUE DRAINAGE AND UNDERGROUND UTILITY EASEMENT
- R-O-W RIGHT OF WAY
- LPL LUBBOCK POWER & LIGHT

LOTS 1-118 AND TRACTS "A" - "C", LINCOLN 16, AN ADDITION to the City of Lubbock, Lubbock County, Texas

2058.00
2019030424



PLAT LIMITS LOT LINE TABLE

LINE	BEARING	DISTANCE
L1	N 52°25'22" W	116.24
L2	N 88°06'50" W	135.41
L3	S 46°31'34" W	114.23
L4	N 88°06'50" W	20.00
L5	N 43°06'50" W	14.14
L6	S 46°53'10" W	21.21
L7	N 43°06'50" W	21.21
L8	S 46°53'10" W	14.14
L9	N 88°06'50" W	20.00
L10	N 43°06'50" W	14.14
L11	S 46°53'10" W	21.21
L12	N 43°06'50" W	14.14
L13	S 46°53'10" W	14.14
L14	N 88°06'50" W	20.00
L15	N 43°06'50" W	14.14
L16	S 46°53'10" W	21.21
L17	S 43°06'50" W	21.21
L18	S 46°53'10" W	14.14
L19	N 43°06'50" W	14.14

INTERIOR LOT LINE TABLE

LINE	BEARING	DISTANCE
L1	S 43°06'50" W	114.14
L2	S 46°53'10" W	10.60
L3	S 46°53'10" W	10.60
L4	S 46°53'10" W	10.60
L5	S 46°53'10" W	10.60
L6	S 46°53'10" W	10.60
L7	S 46°53'10" W	10.60
L8	S 46°53'10" W	10.60
L9	S 46°53'10" W	10.60
L10	S 46°53'10" W	10.60
L11	S 46°53'10" W	10.60
L12	S 46°53'10" W	10.60
L13	S 46°53'10" W	10.60
L14	S 46°53'10" W	10.60
L15	S 46°53'10" W	10.60
L16	S 46°53'10" W	10.60
L17	S 46°53'10" W	10.60
L18	S 46°53'10" W	10.60
L19	S 46°53'10" W	10.60
L20	S 46°53'10" W	10.60
L21	S 46°53'10" W	10.60
L22	S 46°53'10" W	10.60
L23	S 46°53'10" W	10.60
L24	S 46°53'10" W	10.60
L25	S 46°53'10" W	10.60
L26	S 46°53'10" W	10.60
L27	S 46°53'10" W	10.60
L28	S 46°53'10" W	10.60
L29	S 46°53'10" W	10.60
L30	S 46°53'10" W	10.60
L31	S 46°53'10" W	10.60
L32	S 46°53'10" W	10.60
L33	S 46°53'10" W	10.60
L34	S 46°53'10" W	10.60
L35	S 46°53'10" W	10.60
L36	S 46°53'10" W	10.60
L37	S 46°53'10" W	10.60
L38	S 46°53'10" W	10.60
L39	S 46°53'10" W	10.60
L40	S 46°53'10" W	10.60
L41	S 46°53'10" W	10.60
L42	S 46°53'10" W	10.60
L43	S 46°53'10" W	10.60
L44	S 46°53'10" W	10.60
L45	S 46°53'10" W	10.60
L46	S 46°53'10" W	10.60
L47	S 46°53'10" W	10.60
L48	S 46°53'10" W	10.60
L49	S 46°53'10" W	10.60
L50	S 46°53'10" W	10.60
L51	S 46°53'10" W	10.60
L52	S 46°53'10" W	10.60
L53	S 46°53'10" W	10.60
L54	S 46°53'10" W	10.60
L55	S 46°53'10" W	10.60
L56	S 46°53'10" W	10.60
L57	S 46°53'10" W	10.60
L58	S 46°53'10" W	10.60
L59	S 46°53'10" W	10.60
L60	S 46°53'10" W	10.60
L61	S 46°53'10" W	10.60
L62	S 46°53'10" W	10.60
L63	S 46°53'10" W	10.60
L64	S 46°53'10" W	10.60
L65	S 46°53'10" W	10.60
L66	S 46°53'10" W	10.60
L67	S 46°53'10" W	10.60
L68	S 46°53'10" W	10.60
L69	S 46°53'10" W	10.60
L70	S 46°53'10" W	10.60
L71	S 46°53'10" W	10.60

INTERIOR LOT LINE TABLE

LINE	BEARING	DISTANCE
L46	S 43°06'50" W	21.22
L47	S 46°53'10" W	14.14
L48	S 43°06'50" W	14.14
L49	S 46°53'10" W	21.21
L50	S 43°06'50" W	14.14
L51	S 46°53'10" W	21.21
L52	S 43°06'50" W	14.14
L53	S 46°53'10" W	21.21
L54	S 43°06'50" W	14.14
L55	S 46°53'10" W	21.21
L56	S 43°06'50" W	14.14
L57	S 46°53'10" W	21.21
L58	S 43°06'50" W	14.14
L59	S 46°53'10" W	21.21
L60	S 43°06'50" W	14.14
L61	S 46°53'10" W	21.21
L62	S 43°06'50" W	14.14
L63	S 46°53'10" W	21.21
L64	S 43°06'50" W	14.14
L65	S 46°53'10" W	21.21
L66	S 43°06'50" W	14.14
L67	S 46°53'10" W	21.21
L68	S 43°06'50" W	14.14
L69	S 46°53'10" W	21.21
L70	S 43°06'50" W	14.14
L71	S 46°53'10" W	21.21

INTERIOR LOT LINE TABLE

LINE	BEARING	DISTANCE
L72	N 01°53'10" E	28.00
L73	S 46°53'10" W	14.14
L74	S 43°06'50" W	21.21
L75	S 46°53'10" W	21.21
L76	S 43°06'50" W	14.14
L77	S 46°53'10" W	14.14
L78	S 43°06'50" W	14.14
L79	S 46°53'10" W	14.14
L80	S 43°06'50" W	14.14
L81	S 43°06'50" W	14.14
L82	S 46°53'10" W	21.21
L83	S 43°06'50" W	14.14
L84	S 46°53'10" W	21.21
L85	S 43°06'50" W	14.14
L86	S 46°53'10" W	21.21
L87	S 43°06'50" W	14.14
L88	S 46°53'10" W	21.21
L89	S 43°06'50" W	14.14
L90	S 46°53'10" W	21.21
L91	S 43°06'50" W	14.14
L92	S 46°53'10" W	21.21
L93	S 43°06'50" W	14.14
L94	S 46°53'10" W	21.21
L95	S 43°06'50" W	14.14
L96	S 46°53'10" W	21.21
L97	S 43°06'50" W	14.14

INTERIOR LOT LINE TABLE

LINE	BEARING	DISTANCE
L98	S 46°53'10" W	21.21
L99	S 43°06'50" W	14.14
L100	N 88°06'50" W	22.50
L101	N 43°06'50" W	21.21
L102	N 46°53'10" E	14.14
L103	S 88°06'50" E	27.50
L104	N 88°06'50" W	22.50
L105	S 43°06'50" W	14.14
L106	N 46°53'10" E	14.14
L107	N 88°06'50" W	22.50
L108	N 88°06'50" W	16.86
L109	N 46°53'10" W	19.83
L110	N 46°53'10" E	14.14
L111	S 88°06'50" E	27.50
L112	S 88°06'50" E	27.50
L113	S 88°06'50" E	27.50
L114	S 88°06'50" E	27.50
L115	S 88°06'50" E	27.50
L116	S 88°06'50" E	27.50
L117	S 88°06'50" E	27.50
L118	S 88°06'50" E	27.50
L119	S 88°06'50" E	27.50
L120	S 88°06'50" E	27.50
L121	S 88°06'50" E	27.50
L122	S 88°06'50" E	27.50
L123	S 88°06'50" E	27.50
L124	S 88°06'50" E	27.50

PLAT LIMITS CURVE TABLE

CURVE	RADIUS	ARC LENGTH	DELTA ANGLE	CHORD LENGTH	CHORD BEARING
C1	146.00	51.48	20°12'15"	51.22	S 81°47'02" W
C2	198.00	162.77	18°09'47"	62.50	S 80°43'48" W

INTERIOR LOT CURVE TABLE

CURVE	RADIUS	ARC LENGTH	DELTA ANGLE	CHORD LENGTH	CHORD BEARING
C3	43.00	27.50	36°58'50"	27.04	N 16°26'15" W
C4	43.00	10.08	13°25'50"	10.08	N 04°49'45" W
C5	43.00	17.42	23°13'00"	17.30	S 23°09'10" E
C6	43.00	122.55	163°17'41"	85.09	S 46°53'10" W
C7	43.00	12.88	17°09'36"	12.83	S 26°10'52" W
C8	43.00	27.47	36°58'12"	27.01	S 00°42'02" W
C9	43.00	20.94	27°53'46"	20.73	S 32°57'01" W
C10	43.00	20.98	27°56'55"	20.77	N 60°52'21" E
C11	43.00	30.70	40°54'30"	30.05	N 84°41'57" W
C12	43.00	9.99	12°46'42"	9.97	N 57°51'21" W
C13	43.00	2.50	36°38'50"	2.04	N 69°47'25" W
C14	43.00	23.57	31°24'00"	23.27	N 67°10'00" W
C15	43.00	3.94	6°14'50"	3.94	S 85°29'25" E
C16	146.00	18.69	7°20'04"	18.68	N 88°13'08" E
C17	45.00	28.44	36°12'50"	27.97	S 16°13'15" E
C18	45.00	22.97	29°10'46"	22.67	S 12°42'14" E
C19	45.00	5.52	7°02'03"	5.52	N 30°48'58" W
C20	43.00	189.44	252°25'39"	69.39	N 88°06'50" W
C21	43.00	94.72	126°12'50"	76.70	N 28°48'45" E
C22	43.00	17.00	102°35'53"	67.12	N 36°48'53" W
C23	43.00	17.72	23°36'56"	17.60	N 25°17'51" E
C24	45.00	28.44	36°12'50"	27.97	N 15°59'54" E
C25	45.00	28.44	36°12'50"	27.97	N 16°13'15" E
C26	43.00	189.44	252°25'39"	69.39	N 88°06'50" W
C27	43.00	17.86	23°47'43"	17.73	N 22°29'49" W
C28	43.00	76.86	102°25'07"	67.03	S 40°40'36" W
C29	43.00	76.86	102°25'07"	67.03	S 36°54'17" E
C30	43.00	189.44	252°25'39"	69.39	N 88°06'50" W
C31	45.00	28.44	36°12'50"	27.97	N 15°59'54" E
C32	45.00	28.44	36°12'50"	27.97	N 16°13'15" E
C33	43.00	189.44	252°25'39"	69.39	N 88°06'50" W
C34	43.00	18.17	24°08'45"	17.99	N 22°15'18" W
C35	43.00	76.60	102°04'05"	66.87	S 40°51'07" W
C36	43.00	76.60	102°04'05"	66.87	S 37°04'48" E
C37	43.00	18.17	24°08'45"	17.99	N 20°01'37" E
C38	45.00	28.44	36°12'50"	27.97	N 15°59'54" E
C39	198.00	15.76	4°33'43"	15.76	N 89°36'18" E

Approved this 6th day of August, 2019, by
 the City Planning and Zoning Commission of the City of Lubbock, Texas.

Approved _____ Chairman
 Attest: Kristen Sager Secretary

I, Adam N. Light, Registered Professional Land Surveyor, do hereby certify that this plat and description was prepared from an actual survey of the property and that the information hereon represents the findings of this survey to the best of my knowledge and belief.

Adam N. Light
 Registered Professional Land Surveyor No. 6684
 Survey Date: July 30, 2019
 Delta Land Surveying Project No. 19088