

# LOTS 54-140, UPTOWN WEST, an Addition to the City of Lubbock, Lubbock County, Texas

**Plat Notes:**  
Scale: 1" = 100'

Heavy lines indicate plat limits.

All streets, alleys and easements within plat limits are herein dedicated.

All easements dedicated hereby shall entitle the City or utility company using such easements to the right to remove, repair or replace any lines, pipes, conduits or poles within such easements as may be determined by the City or utility company without the City or utility company being responsible or liable for the replacement of property by separate recorded instrument prior to the provision of such service. Such easements shall be at the expense of the City or utility company.

Examinations made for the purpose of determining whether or not the easements or other interests intended for vehicular passage (utility and emergency) or pedestrian access shall not be fenced or otherwise obstructed.

All electrical services shall be in accordance with the Underground Utilities Policy Statement by the Planning and Zoning Commission of the City of Lubbock, Texas.

Any relocation or revision of existing facilities shall be at the developer's expense. Compensation shall be made prior to the recording of any portion of this final plat.

All existing or proposed utility services to and on tracts indicated by this plat shall be contained in the public right-of-way and shall be subject to the requirements of the Lubbock Ordinance, Chapter 10, Section 10.02, as amended, and the City of Lubbock Code of Ordinances.

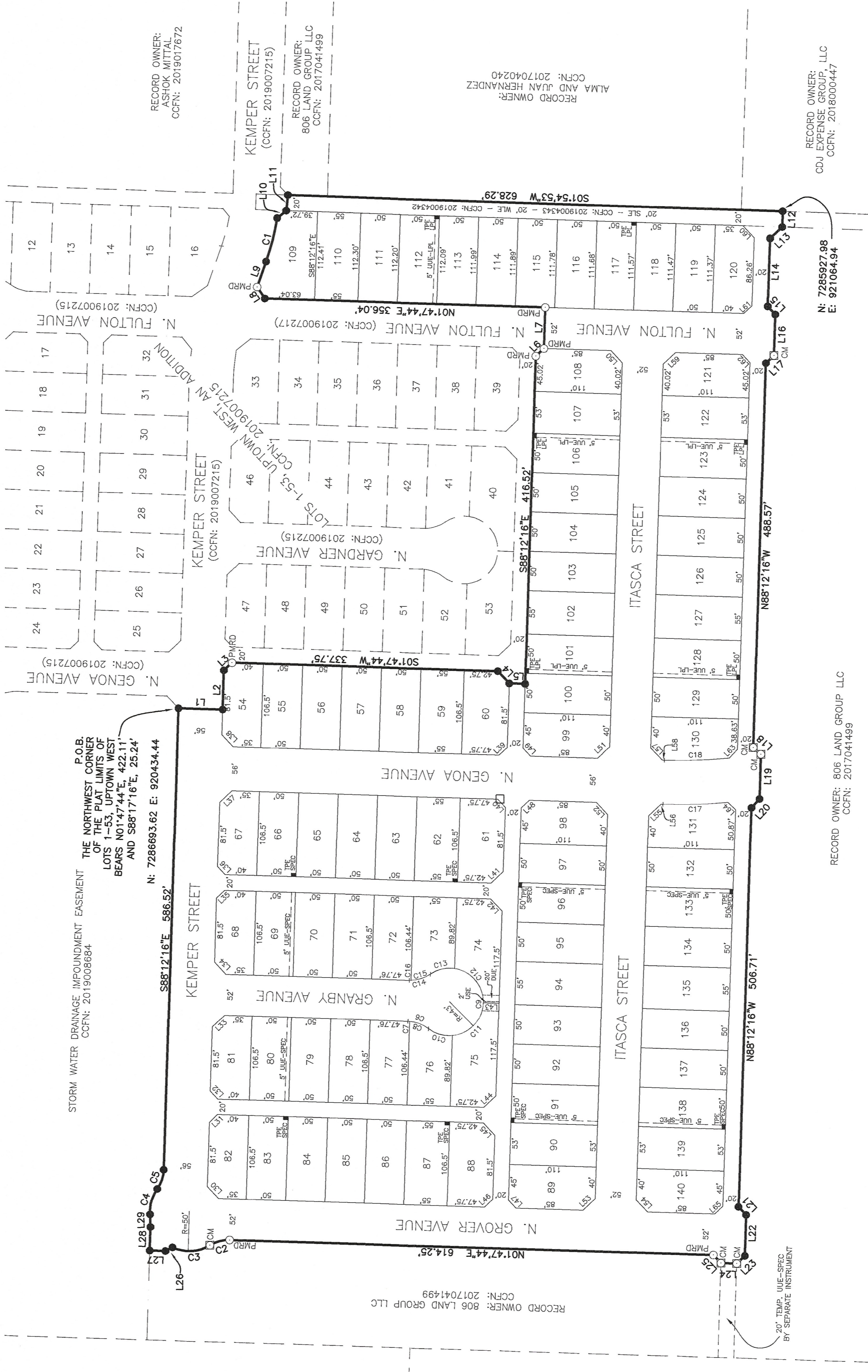
No building permit shall be issued on any survey certificate that is not in accordance with an approved final plat unless an exception is provided by Planning and Zoning Commission policy or by the Lubbock Code of Ordinances.

Minimum floor elevations shall conform to the requirements of the Lubbock Ordinance, Chapter 10, Section 10.02, as amended, and the City of Lubbock Code of Ordinances.

The survey information shown herein was prepared from the result of an on the ground survey of the property shown hereon, and has been completed substantially in compliance with the Professional and Technical Standards promulgated by the Texas Board of Professional Land Surveying Practices Act, Section 663.13.

**General Notes:**  
Record documents other than those shown may affect this tract.  
Monuments indicated as found by this survey are not "physical monuments of record dignity" unless so noted.  
Found monuments are accepted by this surveyor as controlling evidence due to substantial agreement with record documents unless otherwise noted.  
Only those copies which bear an original ink impression seal or embossed seal and signature will be considered a "valid" copy. Delta Land Surveying, LLC, will not be responsible for the content of anything other than a valid copy of this survey.  
**Survey Notes:**  
Lots 54-140, Uptown West, an addition contains 17.31 acres (754,237.9 sq. ft.) within the plat limits.  
Bearings are based on the South line of the Plat Limits of Lots 1-53, Uptown West, an Addition being previously recognized as 88°12'16"E.  
Coordinates are based on the Texas Coordinate System of 1983, North Central Zone and are actual grid coordinates.  
Distances are actual surface distances.  
Set 1/2" iron rod with blue cap marked DELTA BPS 6684 on all interior lot corners.  
Field Notes prepared on separate document on same date.

STORM WATER DRAINAGE IMPROVEMENT EASEMENT  
THE NORTHWEST CORNER OF  
LOTS 1-53, UPTOWN WEST  
BEARS N 88°12'16"E 25.24'  
AND S 88°17'16"E 25.24'  
N: 7286893.62 E: 920434.44  
CCFN: 2019008884



**PLAT LIMITS LINE TABLE**

LINE	BEARING	LENGTH	BEARING	LENGTH
1	S 88°17'16"E	49.48'	E 14°14'	14.14'
2	S 88°17'16"E	49.48'	E 14°14'	14.14'
3	S 88°17'16"E	49.48'	E 14°14'	14.14'
4	S 88°17'16"E	49.48'	E 14°14'	14.14'
5	S 88°17'16"E	49.48'	E 14°14'	14.14'
6	S 88°17'16"E	49.48'	E 14°14'	14.14'
7	S 88°17'16"E	49.48'	E 14°14'	14.14'
8	S 88°17'16"E	49.48'	E 14°14'	14.14'
9	S 88°17'16"E	49.48'	E 14°14'	14.14'
10	S 88°17'16"E	49.48'	E 14°14'	14.14'
11	S 88°17'16"E	49.48'	E 14°14'	14.14'
12	S 88°17'16"E	49.48'	E 14°14'	14.14'
13	S 88°17'16"E	49.48'	E 14°14'	14.14'
14	S 88°17'16"E	49.48'	E 14°14'	14.14'
15	S 88°17'16"E	49.48'	E 14°14'	14.14'
16	S 88°17'16"E	49.48'	E 14°14'	14.14'
17	S 88°17'16"E	49.48'	E 14°14'	14.14'
18	S 88°17'16"E	49.48'	E 14°14'	14.14'
19	S 88°17'16"E	49.48'	E 14°14'	14.14'
20	S 88°17'16"E	49.48'	E 14°14'	14.14'
21	S 88°17'16"E	49.48'	E 14°14'	14.14'
22	S 88°17'16"E	49.48'	E 14°14'	14.14'
23	S 88°17'16"E	49.48'	E 14°14'	14.14'
24	S 88°17'16"E	49.48'	E 14°14'	14.14'
25	S 88°17'16"E	49.48'	E 14°14'	14.14'
26	S 88°17'16"E	49.48'	E 14°14'	14.14'
27	S 88°17'16"E	49.48'	E 14°14'	14.14'
28	S 88°17'16"E	49.48'	E 14°14'	14.14'
29	S 88°17'16"E	49.48'	E 14°14'	14.14'
30	S 88°17'16"E	49.48'	E 14°14'	14.14'
31	S 88°17'16"E	49.48'	E 14°14'	14.14'
32	S 88°17'16"E	49.48'	E 14°14'	14.14'
33	S 88°17'16"E	49.48'	E 14°14'	14.14'
34	S 88°17'16"E	49.48'	E 14°14'	14.14'
35	S 88°17'16"E	49.48'	E 14°14'	14.14'
36	S 88°17'16"E	49.48'	E 14°14'	14.14'
37	S 88°17'16"E	49.48'	E 14°14'	14.14'
38	S 88°17'16"E	49.48'	E 14°14'	14.14'
39	S 88°17'16"E	49.48'	E 14°14'	14.14'
40	S 88°17'16"E	49.48'	E 14°14'	14.14'
41	S 88°17'16"E	49.48'	E 14°14'	14.14'
42	S 88°17'16"E	49.48'	E 14°14'	14.14'
43	S 88°17'16"E	49.48'	E 14°14'	14.14'
44	S 88°17'16"E	49.48'	E 14°14'	14.14'
45	S 88°17'16"E	49.48'	E 14°14'	14.14'
46	S 88°17'16"E	49.48'	E 14°14'	14.14'
47	S 88°17'16"E	49.48'	E 14°14'	14.14'
48	S 88°17'16"E	49.48'	E 14°14'	14.14'
49	S 88°17'16"E	49.48'	E 14°14'	14.14'
50	S 88°17'16"E	49.48'	E 14°14'	14.14'
51	S 88°17'16"E	49.48'	E 14°14'	14.14'
52	S 88°17'16"E	49.48'	E 14°14'	14.14'
53	S 88°17'16"E	49.48'	E 14°14'	14.14'
54	S 88°17'16"E	49.48'	E 14°14'	14.14'
55	S 88°17'16"E	49.48'	E 14°14'	14.14'
56	S 88°17'16"E	49.48'	E 14°14'	14.14'
57	S 88°17'16"E	49.48'	E 14°14'	14.14'
58	S 88°17'16"E	49.48'	E 14°14'	14.14'
59	S 88°17'16"E	49.48'	E 14°14'	14.14'
60	S 88°17'16"E	49.48'	E 14°14'	14.14'
61	S 88°17'16"E	49.48'	E 14°14'	14.14'
62	S 88°17'16"E	49.48'	E 14°14'	14.14'
63	S 88°17'16"E	49.48'	E 14°14'	14.14'
64	S 88°17'16"E	49.48'	E 14°14'	14.14'
65	S 88°17'16"E	49.48'	E 14°14'	14.14'
66	S 88°17'16"E	49.48'	E 14°14'	14.14'
67	S 88°17'16"E	49.48'	E 14°14'	14.14'
68	S 88°17'16"E	49.48'	E 14°14'	14.14'
69	S 88°17'16"E	49.48'	E 14°14'	14.14'
70	S 88°17'16"E	49.48'	E 14°14'	14.14'
71	S 88°17'16"E	49.48'	E 14°14'	14.14'
72	S 88°17'16"E	49.48'	E 14°14'	14.14'
73	S 88°17'16"E	49.48'	E 14°14'	14.14'
74	S 88°17'16"E	49.48'	E 14°14'	14.14'
75	S 88°17'16"E	49.48'	E 14°14'	14.14'
76	S 88°17'16"E	49.48'	E 14°14'	14.14'
77	S 88°17'16"E	49.48'	E 14°14'	14.14'
78	S 88°17'16"E	49.48'	E 14°14'	14.14'
79	S 88°17'16"E	49.48'	E 14°14'	14.14'
80	S 88°17'16"E	49.48'	E 14°14'	14.14'
81	S 88°17'16"E	49.48'	E 14°14'	14.14'
82	S 88°17'16"E	49.48'	E 14°14'	14.14'
83	S 88°17'16"E	49.48'	E 14°14'	14.14'
84	S 88°17'16"E	49.48'	E 14°14'	14.14'
85	S 88°17'16"E	49.48'	E 14°14'	14.14'
86	S 88°17'16"E	49.48'	E 14°14'	14.14'
87	S 88°17'16"E	49.48'	E 14°14'	14.14'
88	S 88°17'16"E	49.48'	E 14°14'	14.14'
89	S 88°17'16"E	49.48'	E 14°14'	14.14'
90	S 88°17'16"E	49.48'	E 14°14'	14.14'
91	S 88°17'16"E	49.48'	E 14°14'	14.14'
92	S 88°17'16"E	49.48'	E 14°14'	14.14'
93	S 88°17'16"E	49.48'	E 14°14'	14.14'
94	S 88°17'16"E	49.48'	E 14°14'	14.14'
95	S 88°17'16"E	49.48'	E 14°14'	14.14'
96	S 88°17'16"E	49.48'	E 14°14'	14.14'
97	S 88°17'16"E	49.48'	E 14°14'	14.14'
98	S 88°17'16"E	49.48'	E 14°14'	14.14'
99	S 88°17'16"E	49.48'	E 14°14'	14.14'
100	S 88°17'16"E	49.48'	E 14°14'	14.14'
101	S 88°17'16"E	49.48'	E 14°14'	14.14'
102	S 88°17'16"E	49.48'	E 14°14'	14.14'
103	S 88°17'16"E	49.48'	E 14°14'	14.14'
104	S 88°17'16"E	49.48'	E 14°14'	14.14'
105	S 88°17'16"E	49.48'	E 14°14'	14.14'
106	S 88°17'16"E	49.48'	E 14°14'	14.14'
107	S 88°17'16"E	49.48'	E 14°14'	14.14'
108	S 88°17'16"E	49.48'	E 14°14'	14.14'
109	S 88°17'16"E	49.48'	E 14°14'	14.14'
110	S 88°17'16"E	49.48'	E 14°14'	14.14'
111	S 88°17'16"E	49.48'	E 14°14'	14.14'
112	S 88°17'16"E	49.48'	E 14°14'	14.14'
113	S 88°17'16"E	49.48'	E 14°14'	14.14'
114	S 88°17'16"E	49.48'	E 14°14'	14.14'
115	S 88°17'16"E	49.48'	E 14°14'	14.14'
116	S 88°17'16"E	49.48'	E 14°14'	14.14'
117	S 88°17'16"E	49.48'	E 14°14'	14.14'
118	S 88°17'16"E	49.48'	E 14°14'	14.14'
119	S 88°17'16"E	49.48'	E 14°14'	14.14'
120	S 88°17'16"E	49.48'	E 14°14'	14.14'
121	S 88°17'16"E	49.48'	E 14°14'	14.14'
122	S 88°17'16"E	49.48'	E 14°14'	14.14'
123	S 88°17'16"E	49.48'	E 14°14'	14.14'
124	S 88°17'16"E	49.48'	E 14°14'	14.14'
125	S 88°17'16"E	49.48'	E 14°14'	14.14'
126	S 88°17'16"E	49.48'	E 14°14'	14.14'
127	S 88°17'16"E	49.48'	E 14°14'	14.14'
128	S 88°17'16"E	49.48'	E 14°14'	14.14'
129	S 88°17'16"E	49.48'	E 14°14'	14.14'
130	S 88°17'16"E	49.48'	E 14°14'	14.14'
131	S 88°17'16"E	49.48'	E 14°14'	14.14'
132	S 88°17'16"E	49.48'	E 14°14'	14.14'
133	S 88°17'16"E	49.48'	E 14°14'	14.14'
134	S 88°17'16"E	49.48'	E 14°14'	14.14'
135	S 88°17'16"E	49.48'	E 14°14'	14.14'
136	S 88°17'16"E	49.48'	E 14°14'	14.14'
137	S 88°17'16"E	49.48'	E 14°14'	14.14'
138	S 88°17'16"E	49.48'	E 14°14'	14.14'
139	S 88°17'16"E	49.48'	E 14°14'	14.14'
140	S 88°17'16"E	49.48'	E 14°14'	14.14'
141	S 88°17'16"E	49.48'	E 14°14'	14.14'
142	S 88°17'16"E	49.48'	E 14°14'	14.14'
143	S 88°17'16"E	49.48'	E 14°14'	14.14'
144	S 88°17'16"E	49.48'	E 14°14'	14.14'
145	S 88°17'16"E	49.48'	E 14°14'	14.14'
146	S 88°17'16"E	49.48'	E 14°14'	14.14'
147	S 88°17'16"E	49.48'	E 14°14'	14.14'
148	S 88°17'16"E	49.48'	E 14°14'	14.14'
149	S 88°17'16"E	49.48'	E 14°14'	14.14'
150	S 88°17'16"E	49.48'	E 14°14'	14.14'
151	S 88°17'16"E	49.48'	E 14°14'	14.14'
152	S 88°17'16"E	49.48'	E 14°14'	14.14'
153	S 88°17'16"E	49.48'	E 14°14'	14.14'
154	S 88°17'16"E	49.48'	E 14°14'	14.14'
155	S 88°17'16"E	49.48'	E 14°14'	14.14'
156	S 88°17'16"E	49.48'	E 14°14'	14.14'
157	S 88°17'16"E	49.48'	E 14°14'	14.14'
158	S 88°17'16"E	49.48'	E 14°14'	14.14'
159	S 88°17'16"E	49.48'	E 14°14'	14.14'
160	S 88°17'16"E	49.48'	E 14°14'	14.14'
161	S 88°17'16"E	49.48'	E 14°14'	14.14'
162	S 88°17'16"E	49.48'	E 14°14'	14.14'
163	S 88°17'16"E	49.48'	E 14°14'	14.14'
164	S 88°17'16"E	49.48'	E 14°14'	14.14'
165	S 88°17'16"E	49.48'	E 14°14'	14.14'

**INTERIOR LOT LINE TABLE**

LINE	BEARING	LENGTH	BEARING	LENGTH
1	S 88°17'16"E	49.48'	E 14°14'	14.14'
2	S 88°17'16"E	49.48'	E 14°14'	14.14'
3	S 88°17'16"E	49.48'	E 14°14'	14.14'
4	S 88°17'16"E	49.48'	E 14°14'	14.14'
5	S 88°17'16"E	49.48'	E 14°14'	14.14'
6	S 88°17'16"E	49.48'	E 14°14'	14.14'
7	S 88°17'16"E	49.48'	E 14°14'	14.14'
8	S 88°17'16"E	49.48'	E 14°14'	14.14'
9	S 88°17'16"E	49.48'	E 14°14'	14.14'
10	S 88°17'16"E	49.48'	E 14°14'	14.14'
11	S 88°17'16"E	49.48'	E 14°14'	14.14'
12	S 88°17'16"E	49.48'	E 14°14'	14.14'
13	S 88°17'16"E	49.48'	E 14°14'	14.14'
14	S 88°17'16"E	49.48'	E 14°14'	14.14'
15	S 88°17'16"E	49.48'	E 14°14'	14.14'
16	S 88°17'16"E	49.48'	E 14°14'	14.14'
17	S 88°17'16"E	49.48'	E 14°14'	14.14'
18	S 88°17'16"E	49.48'	E 14°14'	14.14'
19	S 88°17'16"E	49.48'	E 14°14'	14.14'
20	S 88°17'16"E	49.48'	E 14°14'	14.14'
21	S 88°17'16"E	49.48'	E 14°14'	14.14'
22	S 88°17'16"E	49.48'	E 14°14'	14.14'
23	S 88°17'16"E	49.48'	E 14°14'	14.14'
24	S 88°17'16"E	49.48'		